

# SPONSORSHIP PROPOSAL



# LISBON 2023

**Joint Congress of the  
ECVP • ESVP • ECVCP • ESVCP**

**Joint Congress of the  
European Society of Veterinary Pathology  
European Society of Veterinary Clinical Pathology  
European College of Veterinary Pathologists and  
European College of Veterinary Clinical Pathology**



**31 August, 1 & 2 September 2023**

**Lisbon Convention Center**  
Praça das Indústrias 1, 1300-307  
**Lisbon**  
**Portugal**



# opening statement

The European Society of Veterinary Pathology, the European College of Veterinary Pathologists, the European College of Veterinary Clinical Pathology and the European Society of Veterinary Clinical Pathology are organizing their **joint Congress**.

These Colleges and Societies host more than 500 members and residents, veterinarians working in the fields of veterinary pathology and veterinary clinical pathology.



[www.ecvpath.org](http://www.ecvpath.org)

[www.esvp.eu](http://www.esvp.eu)

[www.esvcp.org](http://www.esvcp.org)

# about us

This international conference will be held from August 31<sup>st</sup> until September 2<sup>nd</sup> 2023 in the Lisbon Convention Center, in the beautiful, historical quarter of Belem, Lisbon, Portugal. A 1000 m2 congress floor, will gather around 500 professionals from all over Europe and other parts of the world, for two and a half days. This modern congress space offers exhibition areas and various other opportunities for brand display, and the worldwide spread of the members of our societies and colleges makes this congress a truly global event.

At this stage, **we are inviting potential sponsors** to support this congress with monetary contributions, equipment, or other forms of sponsorship.

# about the event (1/3)

## Scope

- scientific meeting covering topics from Disease Biomarkers, Digital Pathology, Artificial Intelligence, Cancer Registry System, Forensic Pathology, Surveillance for Animal and Zoonotic Diseases, to special fora on fish and aquatic system's pathology
- maximizing research output and working field development to the benefit of our patients and research subjects

## Target audience

- over 500 attendants: veterinary pathology and veterinary clinical pathology diagnosticians, researchers, industrials and residents
- academia, research, industry

## Objective

- connect with the community
- continuous professional development
- promote business among sponsors and audience

# about the event (2/3)

## When

- Joint congress - August, 31<sup>th</sup> and September 1<sup>st</sup>-2<sup>nd</sup>
- Pre-congress Residents' Day - August 30<sup>th</sup>

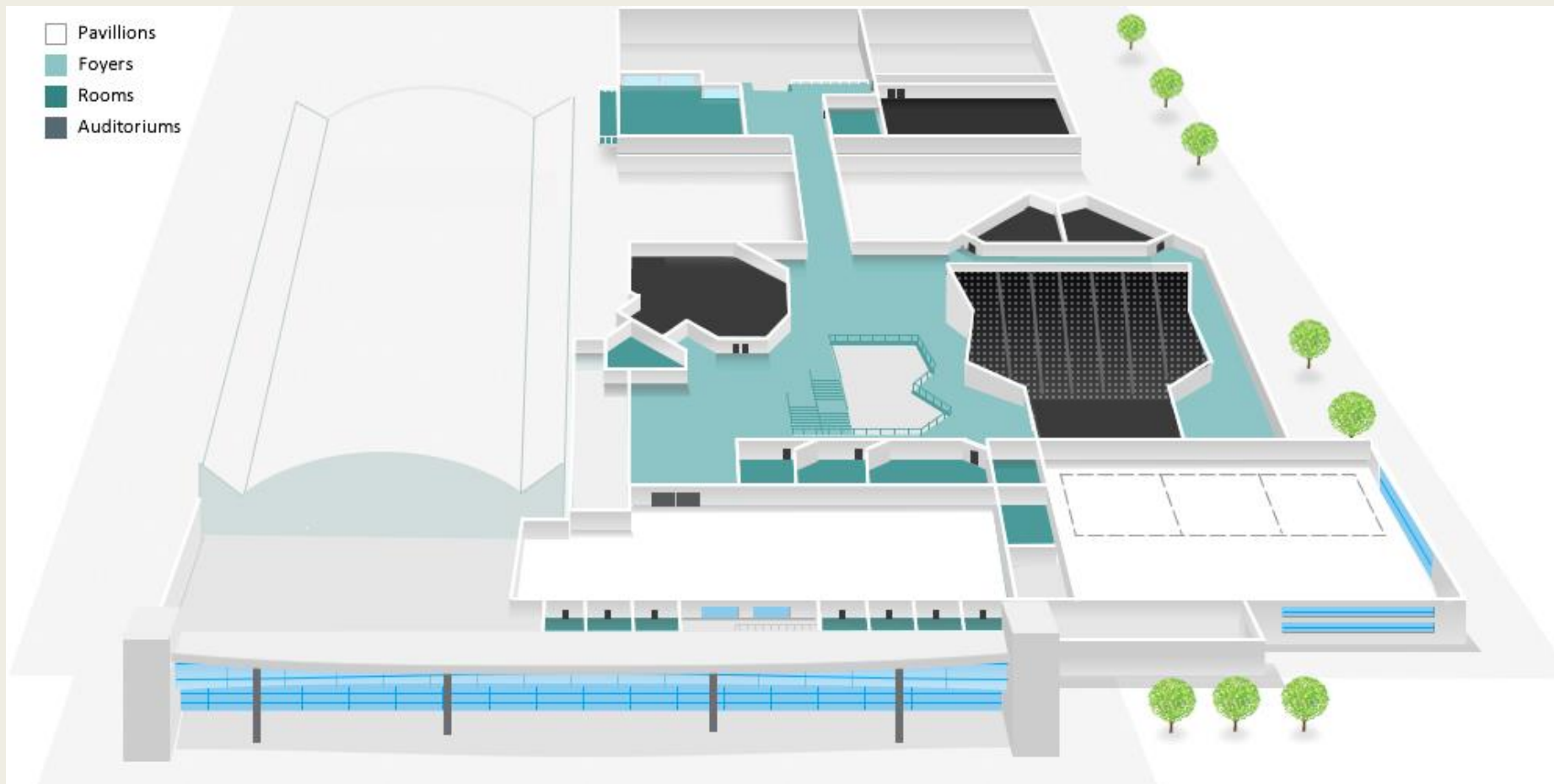
## Where

- [Lisbon Congress Centre](#)



# about the event (3/3)

- Coffee breaks and daily lunches will be held within the main exhibition area
- Exhibition is (mainly) planned in the foyer (light green area) with all auditoriums (black areas) - foyer ([Foyer D](#)) has generous space, with approximately 1000 sqm, variable height between 3 and 7 meters, natural light and climate control.



# sponsorship opportunities (1/3)

## Sponsor packages

	Gold	Silver	Bronze	Exhibitor L	Exhibitor S
Company logo on the homepage of the congress website	X	X			
Company logo prominently in all official congress communication	X				
Company logo and link to the company website on the congress website	X	X	X		
Company name mentioned on the congress website				X	X
Company logo in the final programme	X	X	X	X	X
Company logo in the final proceedings	X	X	X		
Company name in the final proceedings				X	X
Company profile in the final proceedings	X	X			
Company logo Projected during void moments of the programme	X	X	X	X	X
On-site placement of company banner	X	X	X		
Follow-up e-mail to delegates after the congress via the congress secretary according to the EU GDPR guidelines	2	1			
Advertisement 1 page in the final proceedings	X				
Advertisement ½ page in the final proceedings		X			
Advertisement ¼ page in the final proceedings			X		
Insert in the congress bag	2	1	1		
Booth size	12 m2	8 m2	6 m2	4 m2	2 m2
Free full congress registration(s)	3	2			
Exhibitor registrations (access to the exhibition only)	3	2	2	2	1
Welcome reception tickets	3	2	2	2	1
Gala dinner tickets	3	2	2	1	
Additional; exhibitor registrations	€150	€150	€150	€150	€150
Additional; Gala dinner tickets	€100	€100	€100	€100	€100
<b>Price</b>	<b>€10 000</b>	<b>€7 500</b>	<b>€5 000</b>	<b>€3 500</b>	<b>€2 000</b>

# sponsorship opportunities (2/3)

## Item deals

Catering / social events	cost
Coffee/tea breaks per congress day <i>Two breaks per day, company logo present on the buffets, logo shown in the programme</i>	€2 500
Lunch per congress day <i>One break per day, company logo present on the buffets, logo shown in the programme</i>	€4 000
Gala dinner <i>Exclusive right to sponsor gala dinner, company promotion present during the dinner and dance, with access to multiple LCD screens, short speech to delegates, all hosted in a venue, unique to the host city. This event includes fine food with a local flair, ample refreshments and live entertainment/dancing until late.. A fantastic networking event and the grand finale to conference, fully participated since it is included in the registration price.</i>	€10 000

Lecture sponsor	cost
<i>*Speakers are invited by the Scientific Committee. Costs for lecture sponsorship include travel expenses, accommodation, registration, gala dinner, attendance</i> <i>**Company logo shown in the programme and prior to the lecture</i>	
Resident day speaker	€500
European & UK speaker	€1 000
International speaker	€2 000
Keynote speaker (60 minute lecture)	€2 500



# sponsorship opportunities (3/3)

## Item deals

### Workshop sponsor

*\*Costs for workshop sponsorship takes into account equipment and materials provision, honoraria, and some travel and accommodation, registration and gala dinner attendance expenses*

*\*\*Company logo shown in the programme and prior to the lecture*

	cost
Lab	€1 500
Wetlab	€2 500

### Lecture sponsor

*\*Sponsor needs to provide the selected materials*

	cost
Congress bag	€2 500
Lanyards	€2 000
Bag insert	€500

# terms and conditions

- If you wish to explore the possibility of additional options for sponsor organized events during the congress, please contact the congress secretariat
- Sponsors wishing to sponsor more than one package should discuss this with the congress secretariat to confirm availability.
- The stand fees **do not** include the costs of stand building, carpeting, electricity or any individual other stand-related costs.
- Each exhibiting company must have badges for all their attending representatives. Additional exhibitor badges are available for purchase at the rate of € 150.00/3 days.
- Payment is due **30 days after receipt of the invoice**, and in any event **paid prior to Congress**. Payments that have not been received prior to congress may lead to delay in your company / exhibitors accessing the exhibition.
- The congress is liable to meet the Portuguese and European VAT regulations. In case of a change in the VAT rates, this will be charged through as well.
- Force majeure: If due to war, strikes, industrial action short of a strike, import or export embargo, lockouts, accidents, fire, blockade, flood, natural catastrophes, pandemics and epidemics or other obstacles over which the PARTY has no control the PARTY shall not be held responsible for any loss or damage which may be incurred as a result of such failure. Should the event of force majeure continue for longer than one month, the PARTY adversely affected shall have the option of terminating this agreement immediately without further liability.

# contact information

To discuss sponsoring opportunities in more detail, please contact the Conference Secretariat:

## **Pauwels Congress Organisers**

Avenue Céramique 222

6221 KX Maastricht

The Netherlands

**Contact person:** Joeri Slangen

T: +31 43 3218180

E: [j.slangen@pauwelspcó.nl](mailto:j.slangen@pauwelspcó.nl)

W: [www.pauwelspcó.nl](http://www.pauwelspcó.nl)

# our team (1/2)

## Local Organizing Committee (LOC)

### VETERINARY PATHOLOGY

<i>Name</i>	<i>Title</i>	<i>Affiliation</i>
Conceição Peleteiro	DVM, PhD, dipl. ECVF	FMV-ULisboa (retired)
Pedro Faísca	DVM, DEA, PhD	FMV-ULHT
Tânia Carvalho	DVM, PhD	Champalimaud Foundation
Inês Berenguer Veiga	DVM, PhD, dipl. ECVF	Vetsuisse, University of Bern
Rute Noiva	DVM, PhD, FHEA	FMV-ULisboa
Jorge Correia	DVM, PhD	FMV-ULisboa
Hugo Pissarra	DVM, DM, M.Sc	FMV-ULisboa

### VETERINARY CLINICAL PATHOLOGY

<i>Name</i>	<i>Title</i>	<i>Affiliation</i>
Nazaré Pinto da Cunha	DVM, PhD, dipl. ECVCP	FMV-ULHT
Mariana Serra	DVM, FRCPath, dipl. ECVCP	IDEXX Laboratories
Pedro Serra	DVM, dipl. ACVP (Clinical Pathology)	VLSI SYNLAB
Margarida Canelas Domingos	DVM, dipl. ECVCP	IDEXX Laboratories
Marta Costa	DVM, MSc, FRCPath, Dip. ECVCP	IDEXX Laboratories
Helena Ferreira	DVM, FRCPath, dipl. ACVP (Clinical Pathology), MRCVS	Axiom Veterinary Laboratories

# our team (2/2)

Feel free to **contact** Pedro Faísca ([pedrofaisca@ulusofona.pt](mailto:pedrofaisca@ulusofona.pt)) or Joeri Slangen ([j.slangen@pauwelspc.nl](mailto:j.slangen@pauwelspc.nl)) on behalf of the local organizing committee for all additional questions and/or to discuss the possibility of future collaboration.

We look forward on connecting and hope to talk to you soon!



Pedro Faísca

DVM, DEA, PhD

Co-Chair of the LOC



Maria C. Peleteiro

DVM, PhD, dipl. ECVP

Co-Chair of the LOC



Nazaré Pinto da Cunha

DVM, PhD, dipl. ECVCP

Co- Chair of the LOC



Joeri Slangen

Project manager

Congress Secretary



# LISBON 2023

Joint Congress of the  
ECVP • ESVP • ECVCP • ESVCP



# THANK YOU

